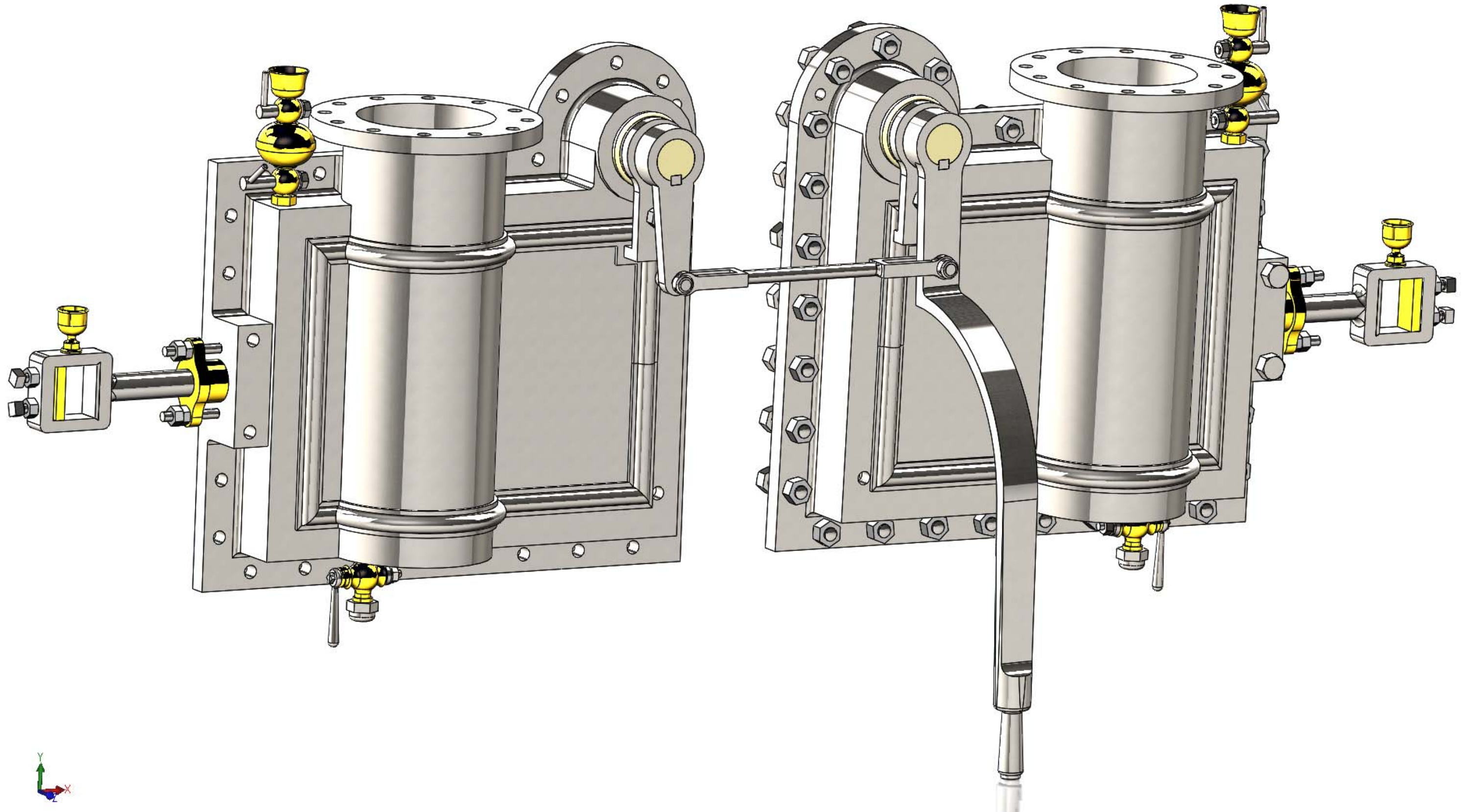
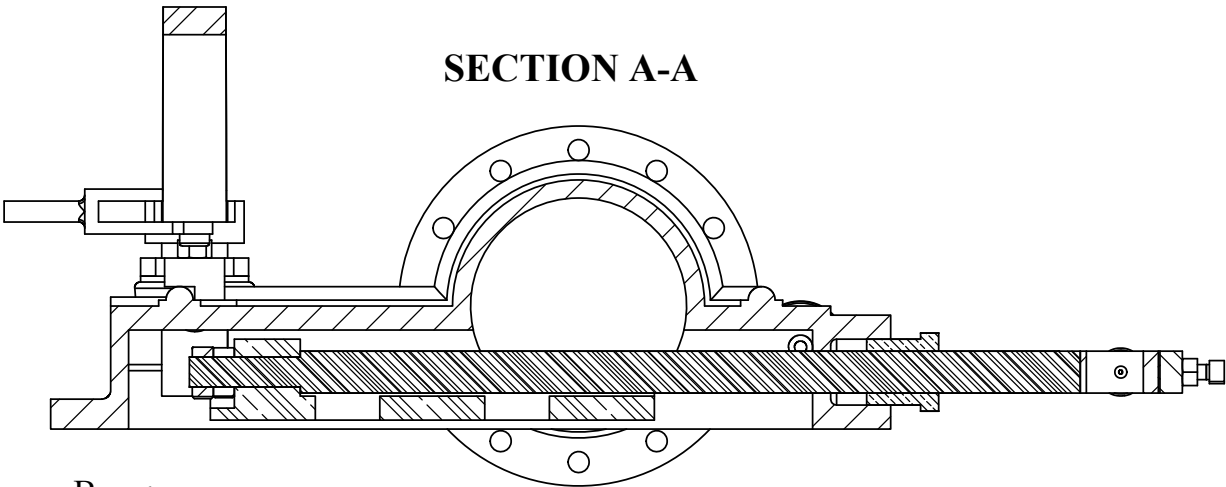


Cutoff Chests

CC



SECTION A-A

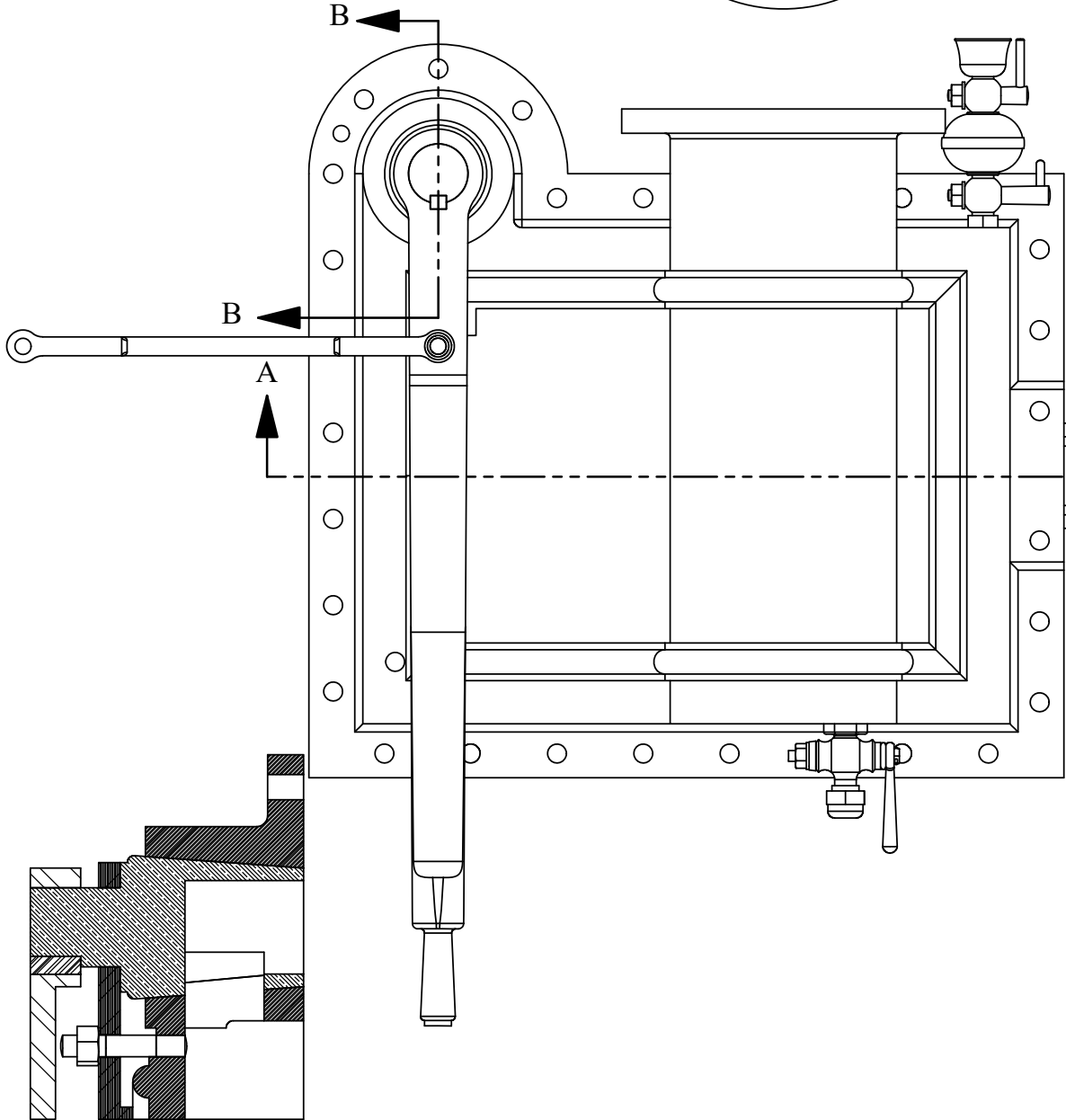


B

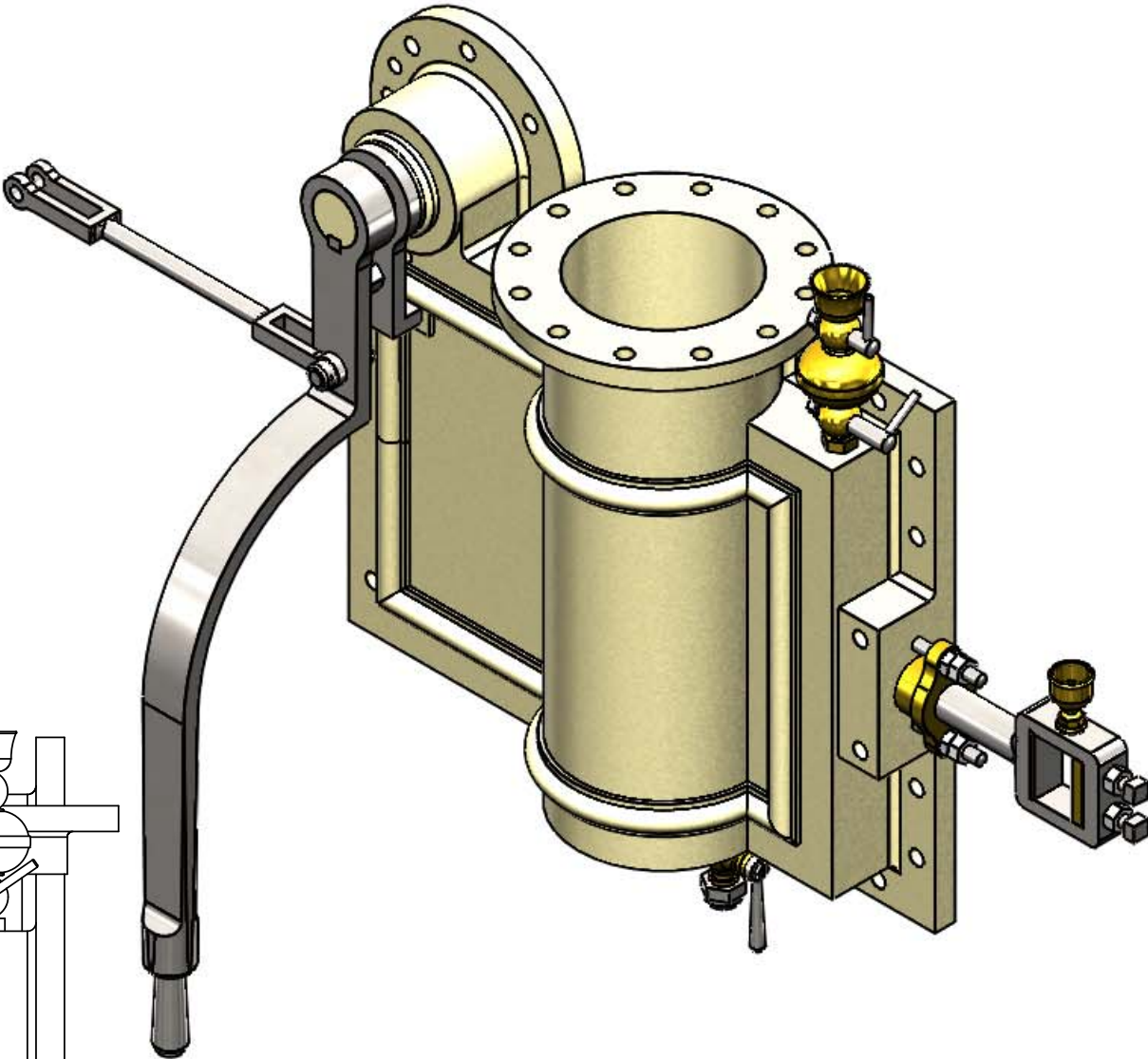
B

A

A



SECTION B-B OF BYPASS COCK
SHOWN IN BYPASS POSITION
SCALE 1 : 6



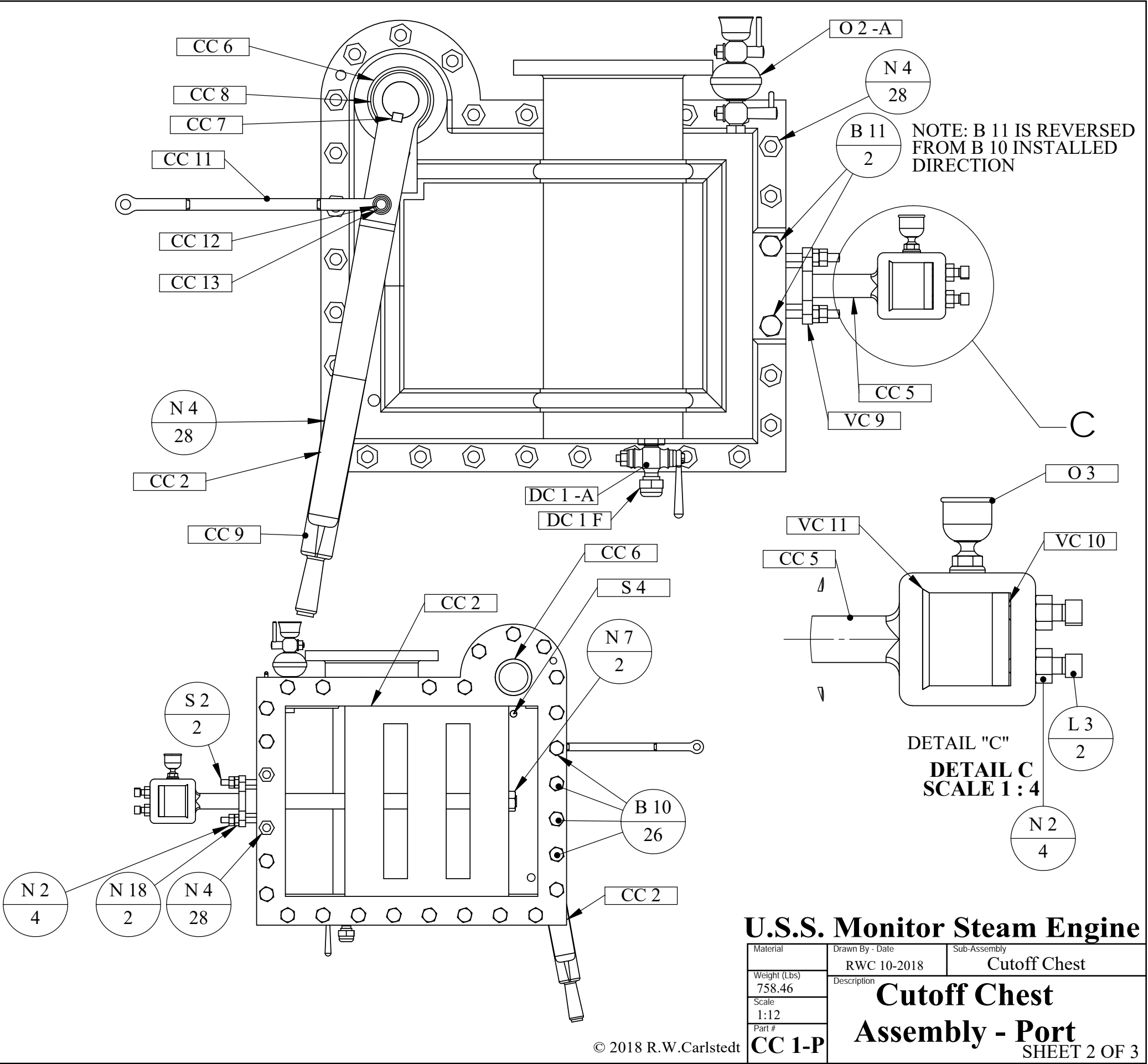
PORT CUTOFF CHEST
W/O FASTENERS

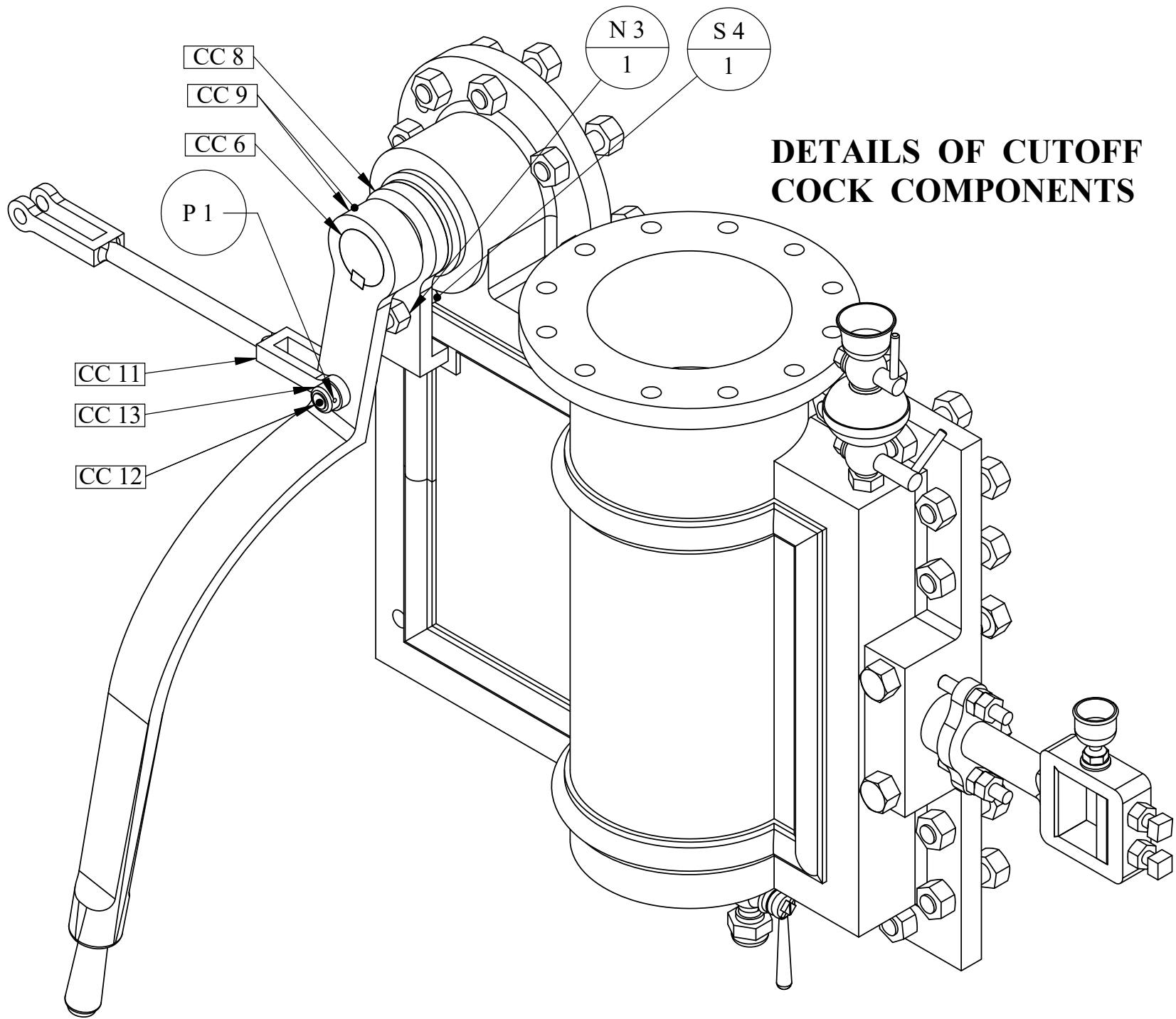
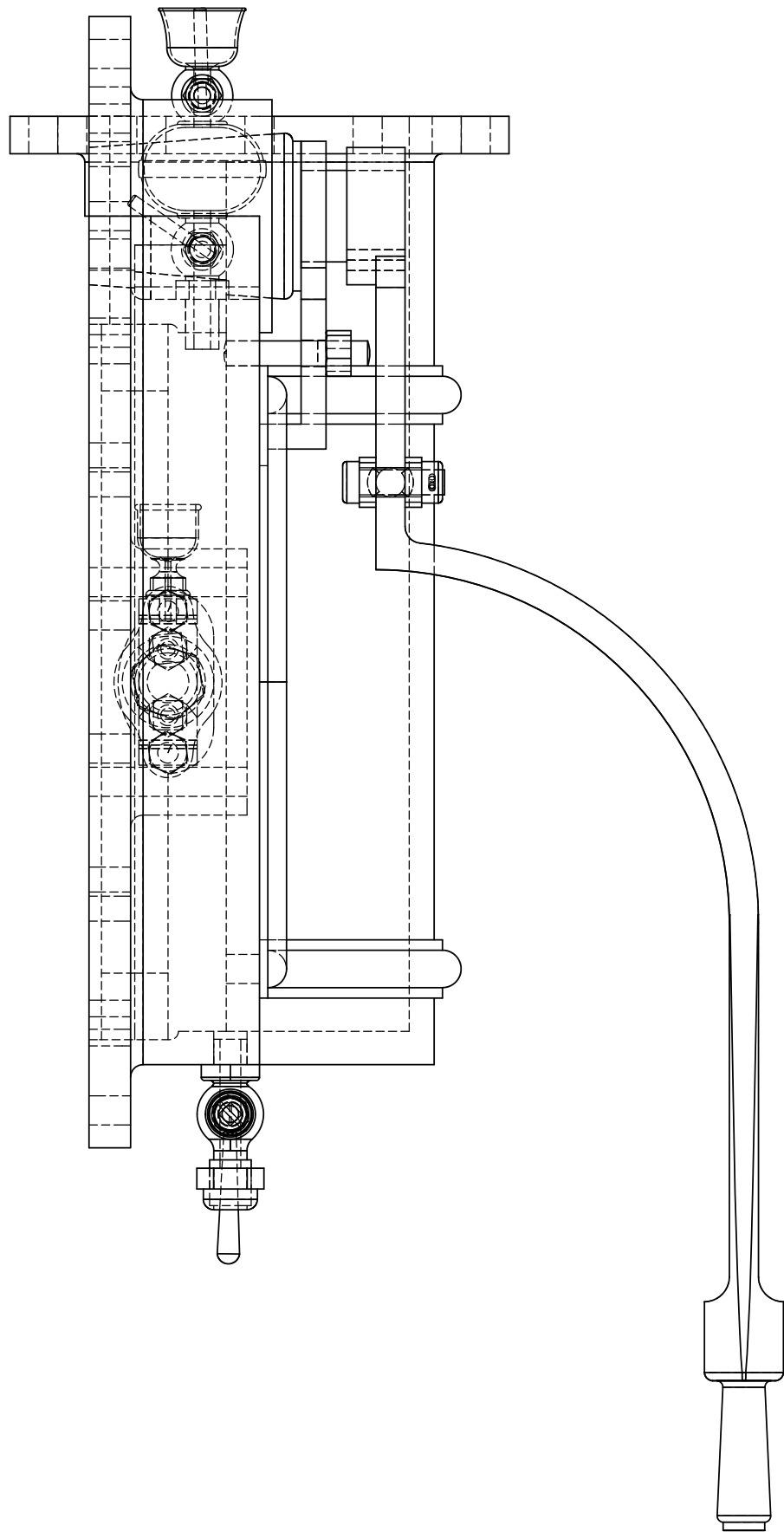
U.S.S. Monitor Steam Engine

Material	Drawn By - Date	Sub-Assembly
Weight (Lbs)	RWC 12-2018	Cutoff Chest
725.49	Description	Cutoff Valve Chest
Scale		Assembly- Port
1:8		
Part #		
CC 1-P		

PART NUMBER	DESCRIPTION	QTY.
CC 2	Port Cutoff Valve Chest	1
CC 4	Cutoff Valve	1
CC 5	Cutoff Valve Rod	1
CC 6	Cutoff Bypass Cock	1
CC 7	Cutoff Cock Key	1
CC 8	Cutoff Bypass Cock Clamp-P	1
CC 9	Cutoff Bypass Handle-Port	1
CC 11	Cutoff Handle Linkage	1
CC 12	Cutoff Linkage Pin	1
CC 13	Cutoff Linkage Collar	1
VC 9	Valve Rod Packing Gland	1
VC 10	Valve Rod Box Way Insert	1
VC 11	Valve Rod Hardened Insert	1
O 2	Tallow Pot Lubricator	1
O 3	Oil Cup- Medium	1
DC 1	Drain Cock	1
P 1	3/16" X 1 1/4" Pin	1
S 2	Stud 5/8" x 5"	2
S 4	Stud 3/4" X 4 1/4"	1
N 2	5/8" Hex Nut	4
N 3	3/4" Hex Nut	1
N 4	7/8" Hex Nut	28
N 7	1-1/4" Hex Nut-Locking	2
N 18	5/8" Hex Nut -Locking	2
L 3	Square Locking Screw 5/8" x 2-1/8"	2
B 10	7/8" Bolt x 3-1/2"	26
B 11	7/8" Bolt x 7"	2

BILL OF MATERIALS



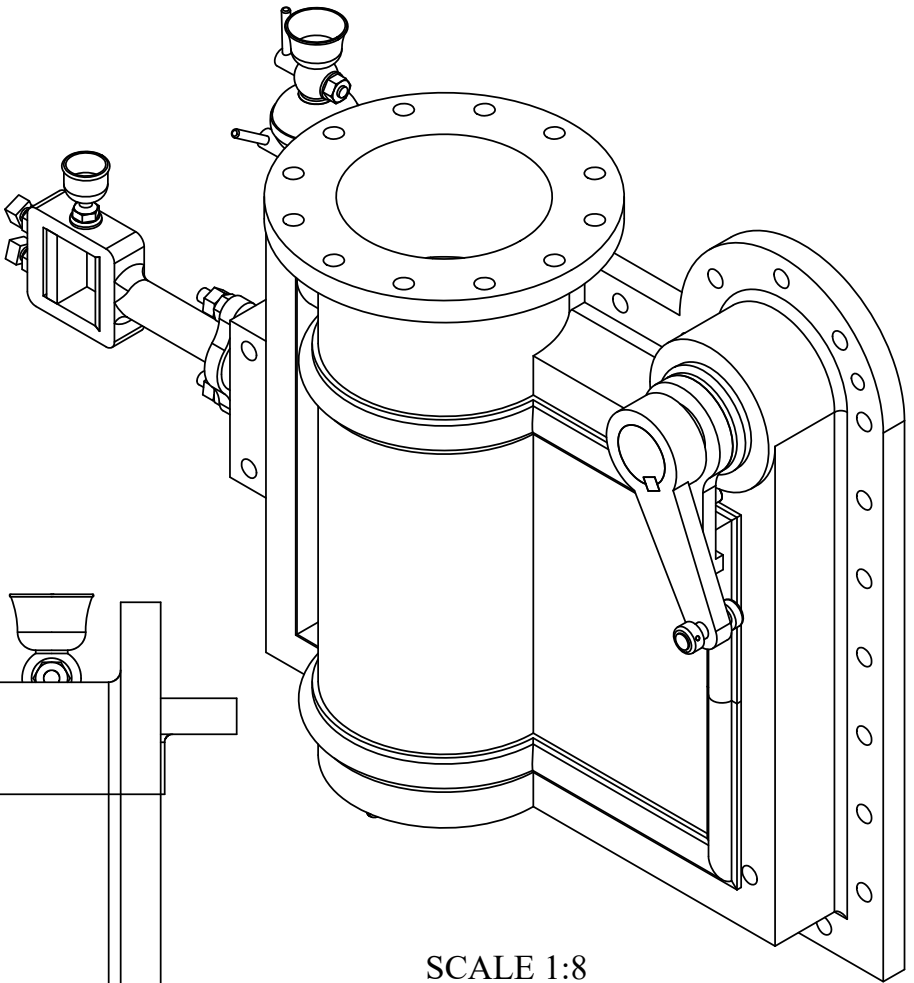
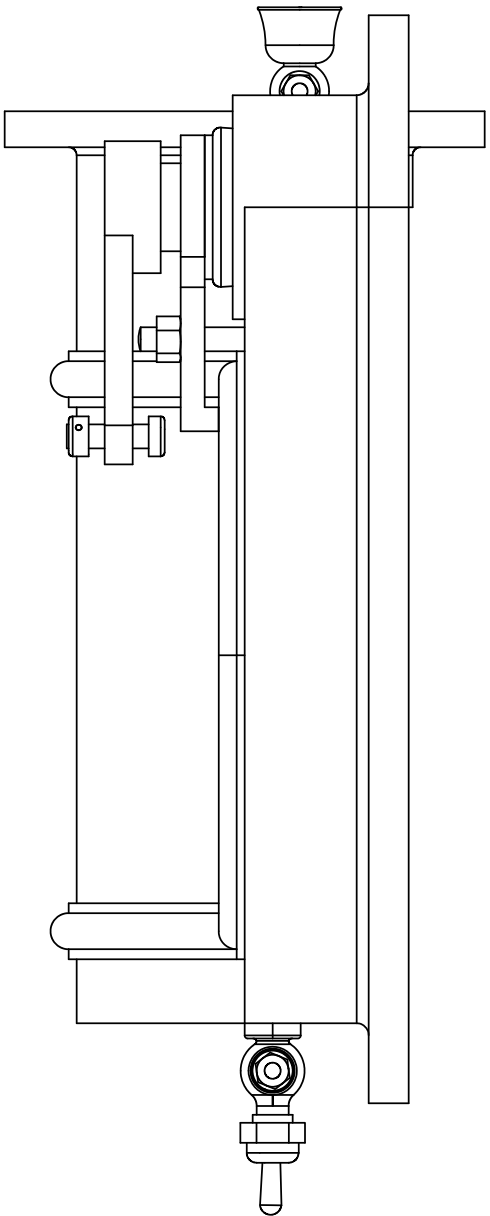
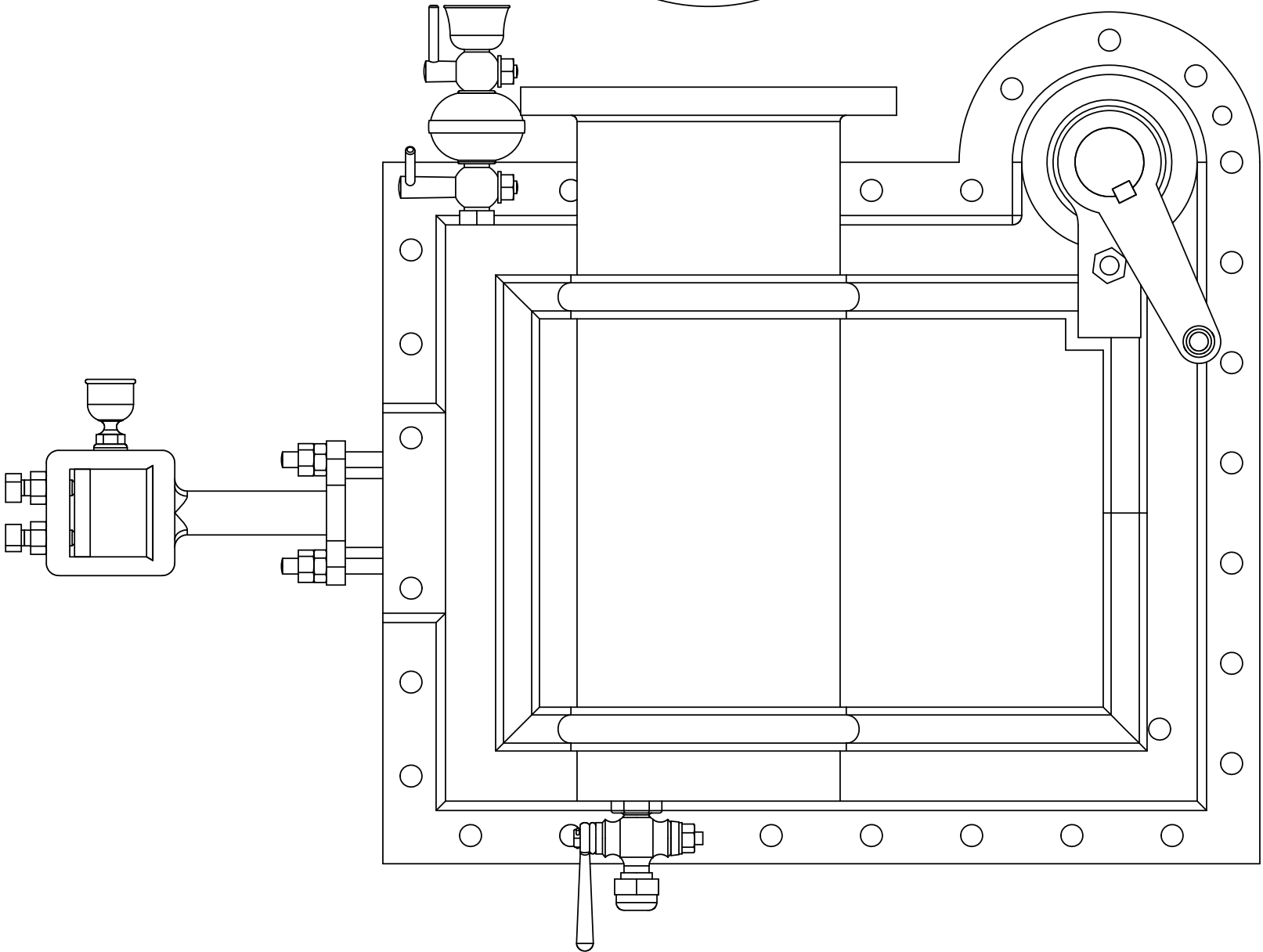
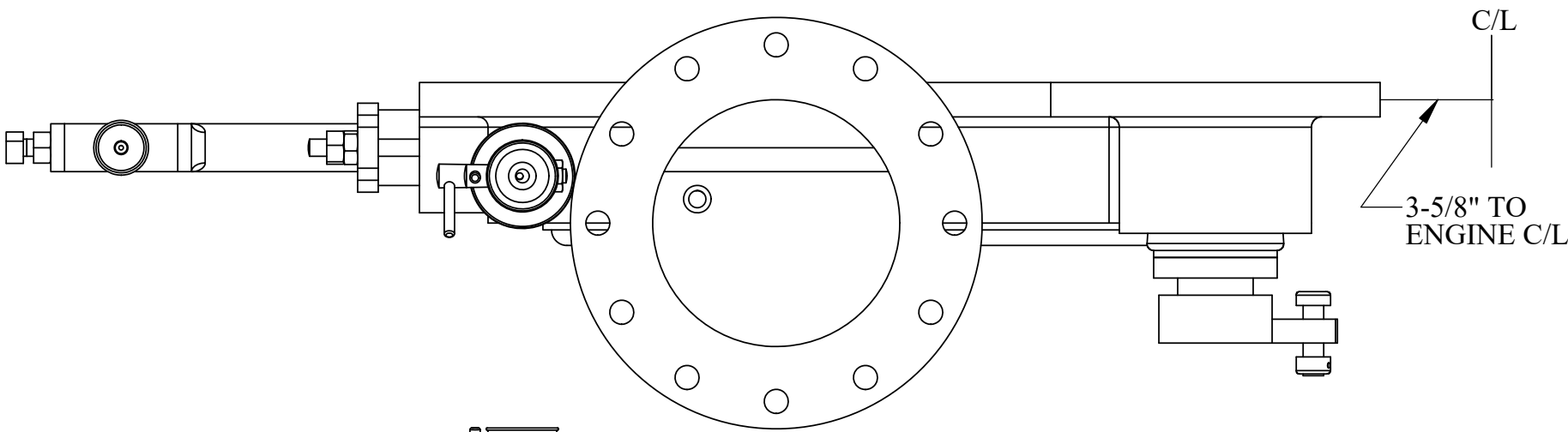


**DETAILS OF CUTOFF
COCK COMPONENTS**

VIEW WITH ALL FASTENERS ATTACHED

U.S.S. Monitor Steam Engine

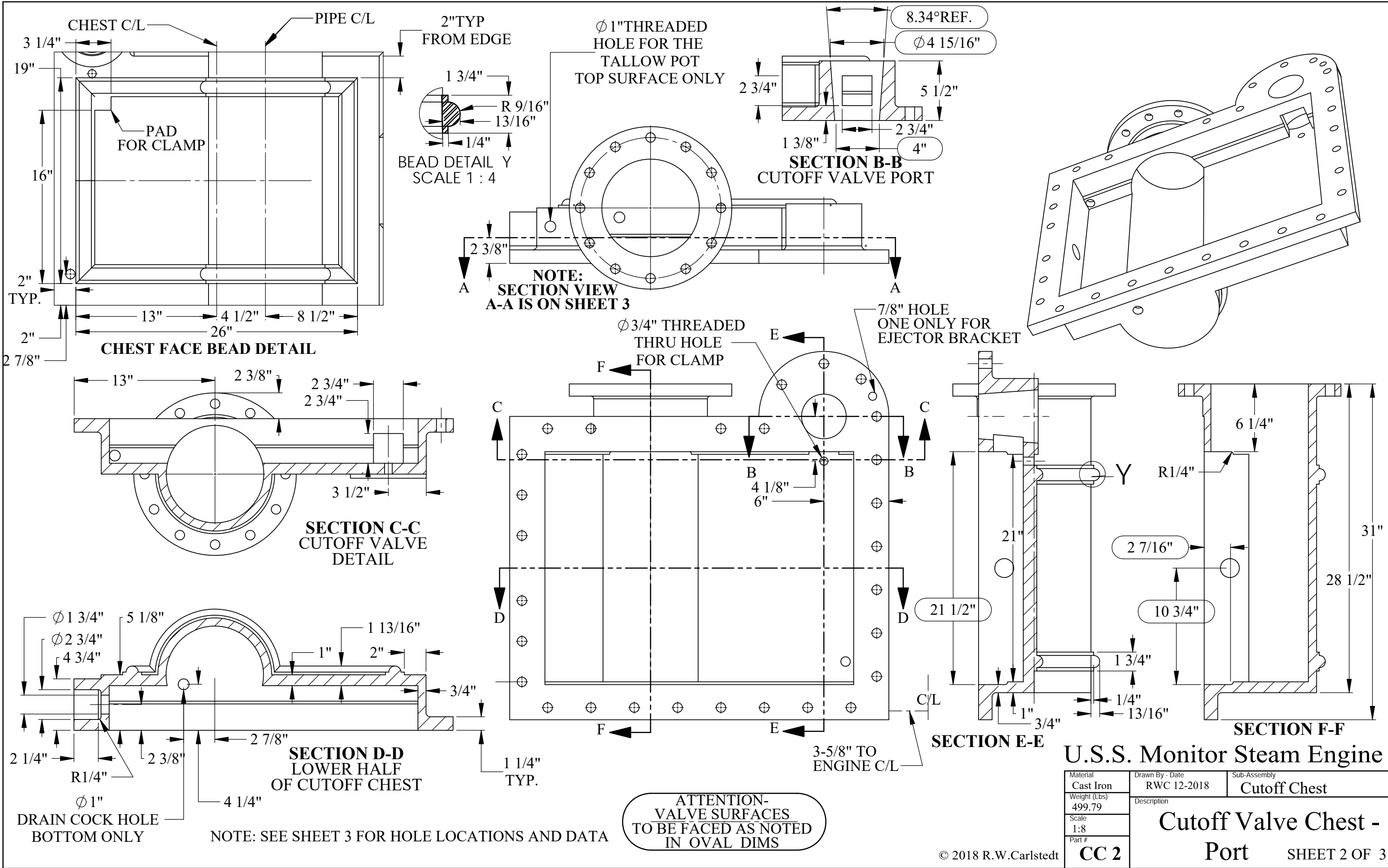
Material	Drawn By - Date	Sub-Assembly
Weight (Lbs)	RWC 10-2018	Cutoff Chest
758.46	Description	Cutoff Chest Assembly - Port
Scale		
1:8		
Part #		
CC 1-P	SHEET 3 OF 3	

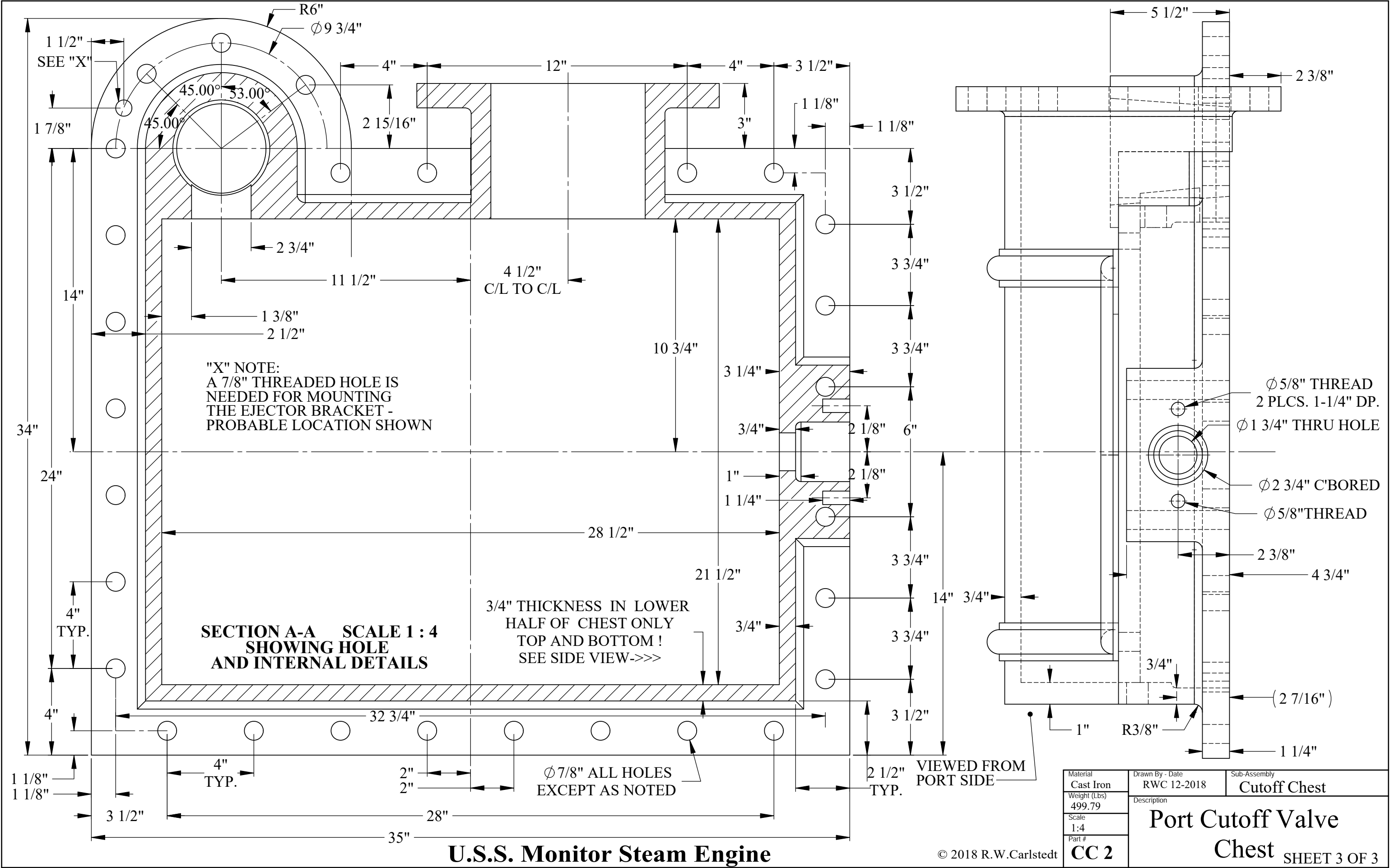


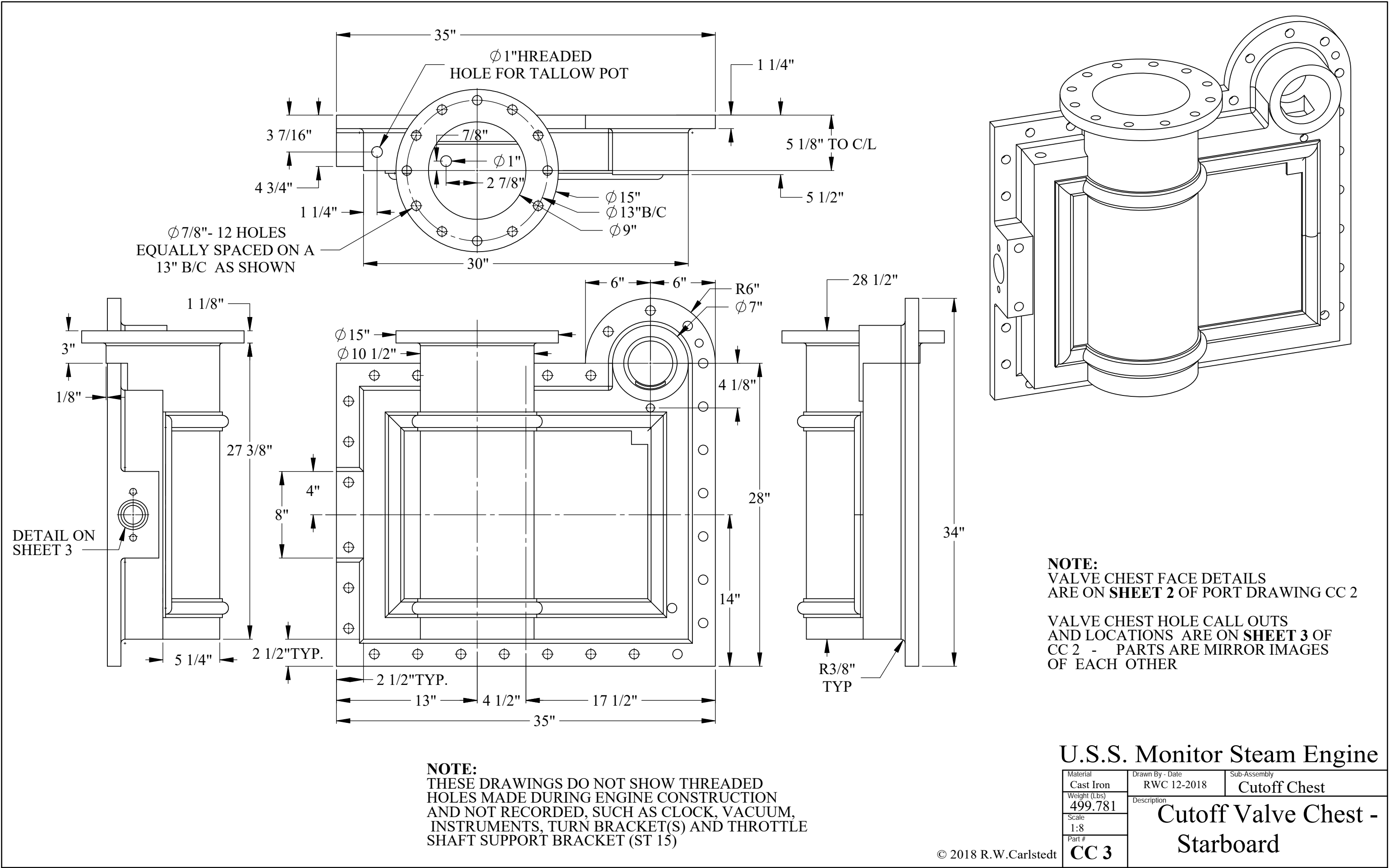
SCALE 1:8

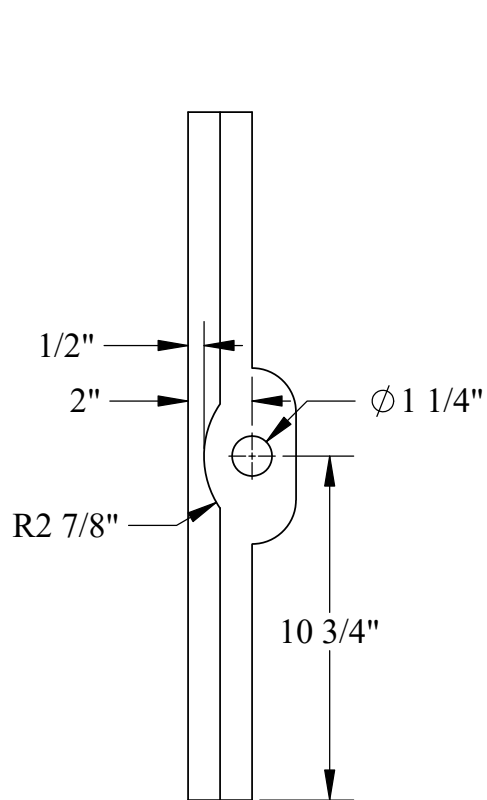
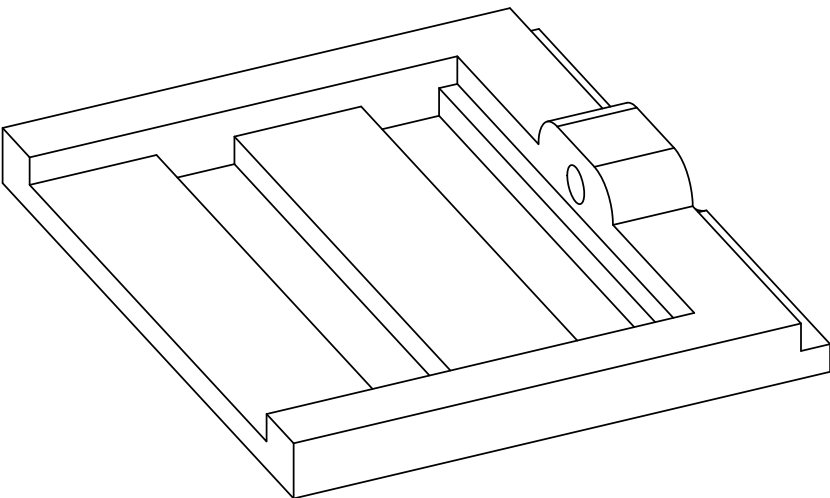
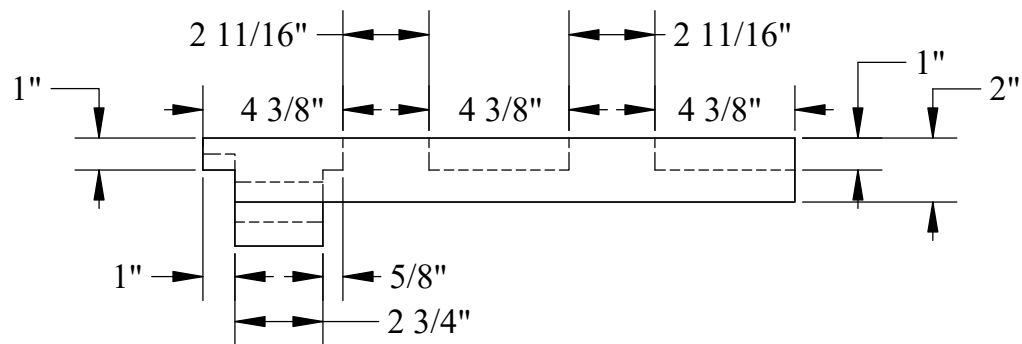
U.S.S. Monitor Steam Engine

Material	Drawn By - Date	Sub-Assembly
Weight (Lbs)	RWC 12-2018	Cutoff Chest
Scale	Description	
1:6		
Part #	Cutoff Valve Chest Assembly- Starboard	
CC 1-S		

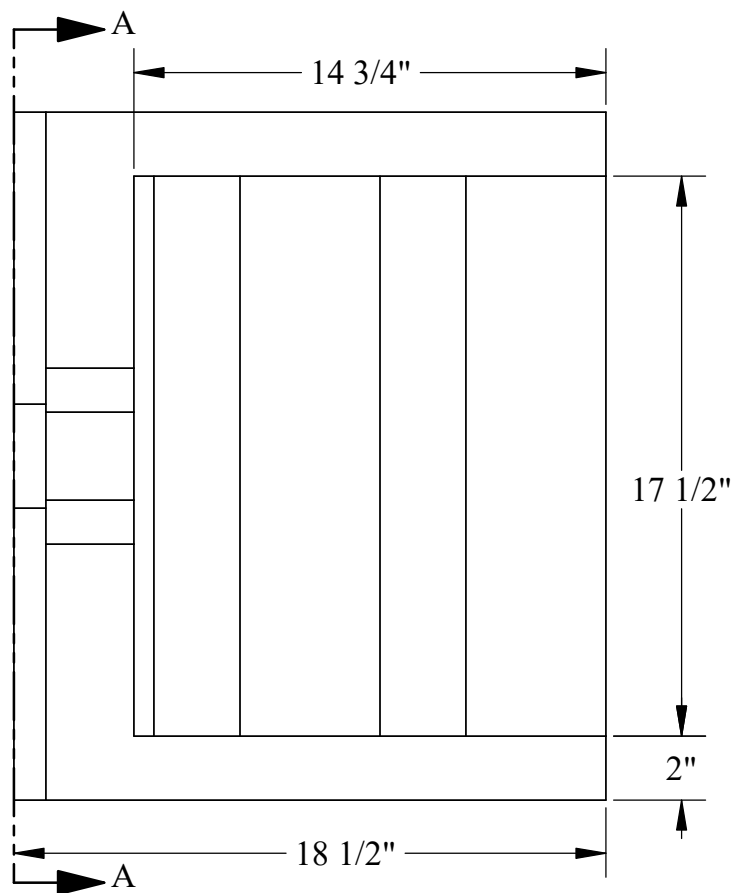




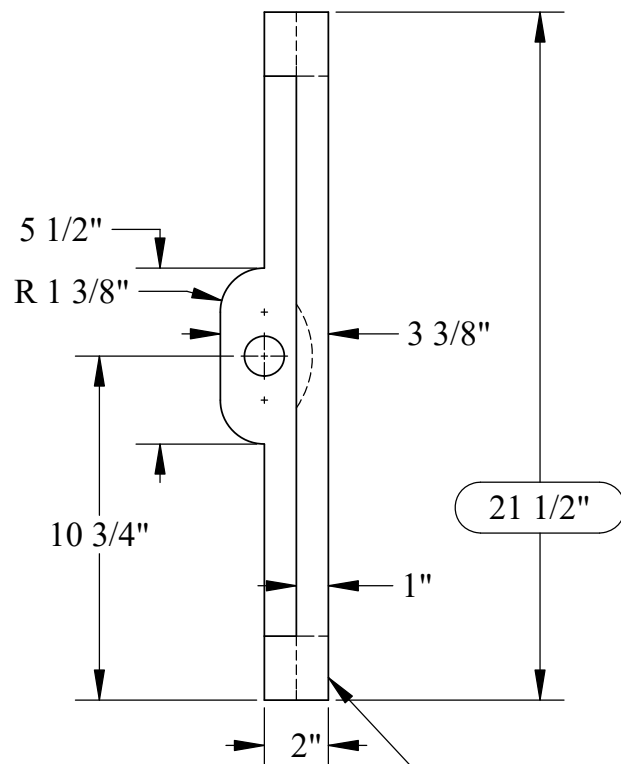




SECTION A-A
SHOWING NUT RELIEF



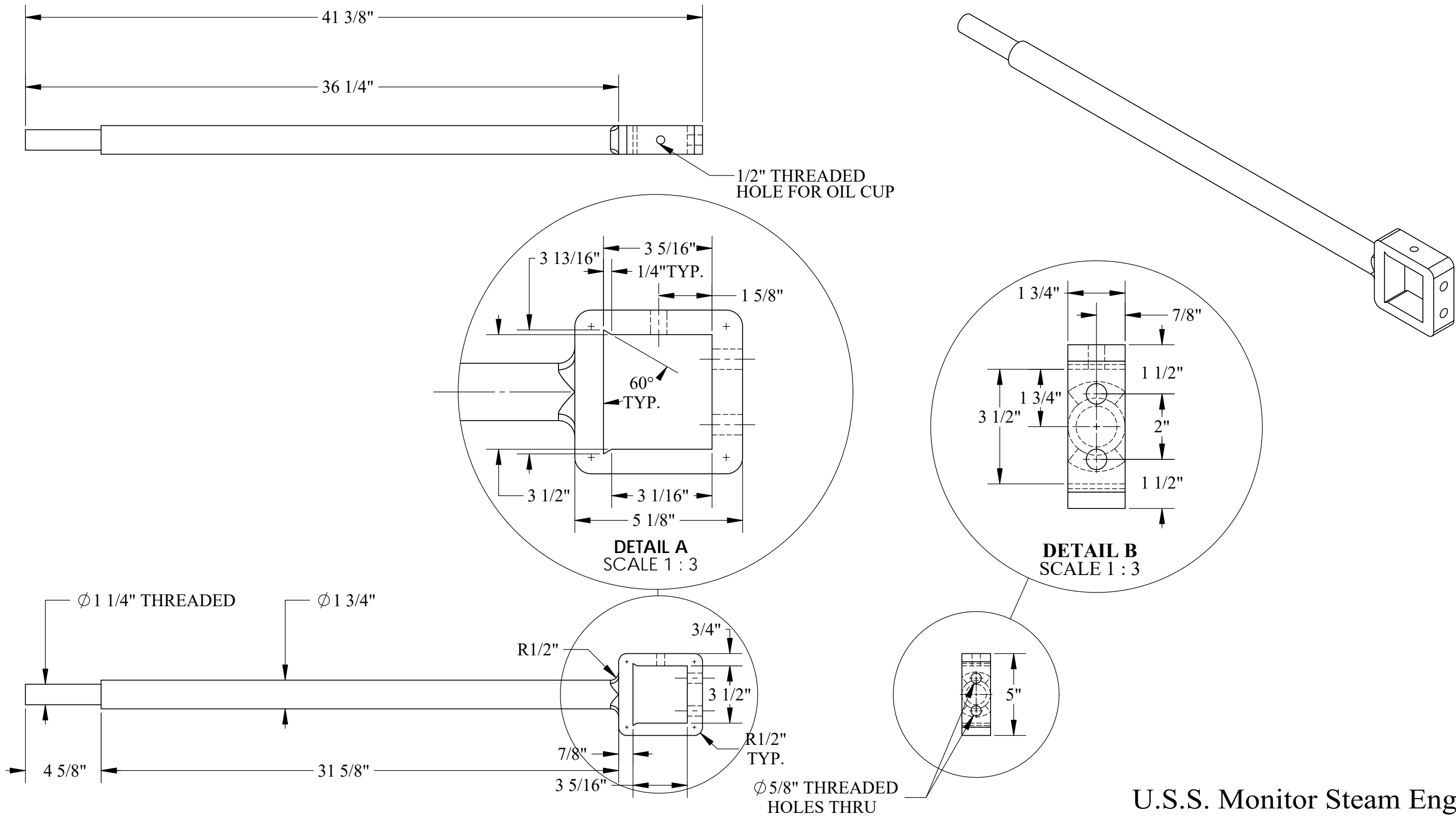
ATTENTION-
VALVE SURFACES
TO BE FACED AS NOTED
IN OVAL DIMS



THIS FACE IS FINISHED
VERY SMOOTH AND FITS AGAINST
THE FRONT OF VALVE CHEST VC 2-3

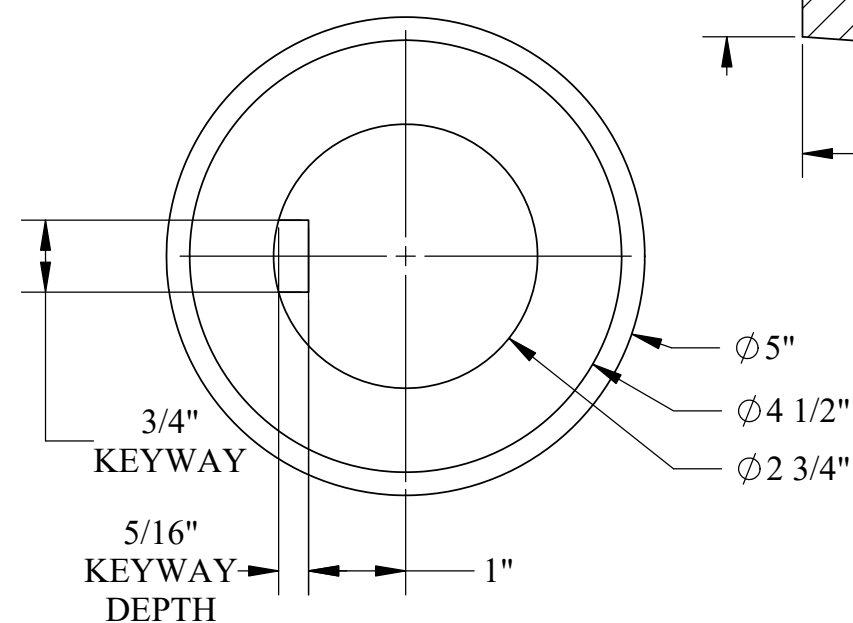
U.S.S. Monitor Steam Engine

Material Cast Iron	Drawn By - Date RWC 10-2018	Sub-Assembly Cutoff Chest
Weight (Lbs) 113.38	Cutoff Valve	
Scale 1:6		
Part # CC 4		



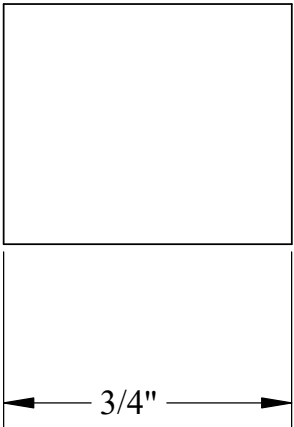
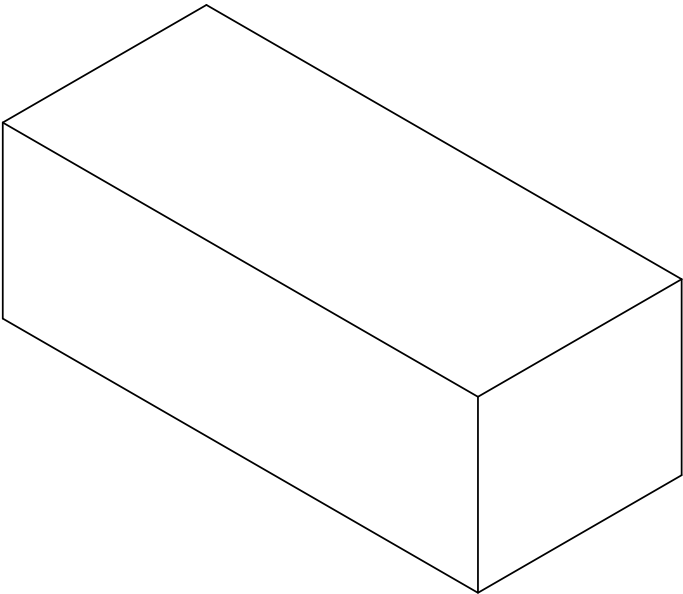
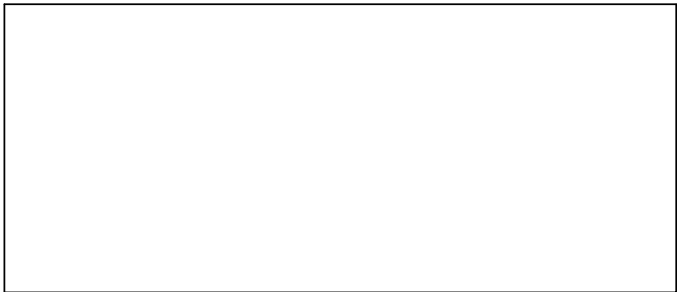
U.S.S. Monitor Steam Engine

Material STEEL	Drawn By - Date RWC 10-2018	Sub-Assembly Cutoff Chest
Weight (Lbs) 30.06	Description Cutoff Valve Rod	
Scale 1:6		
Part # CC 5		



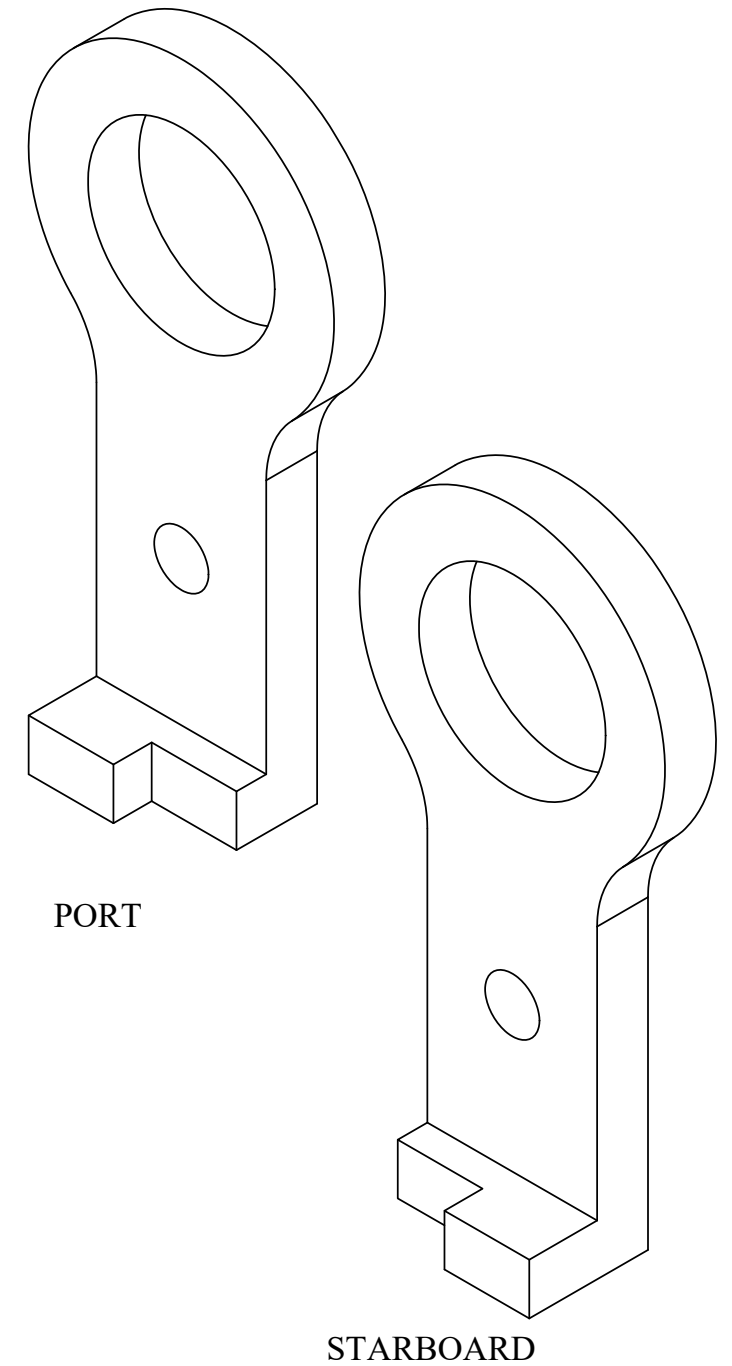
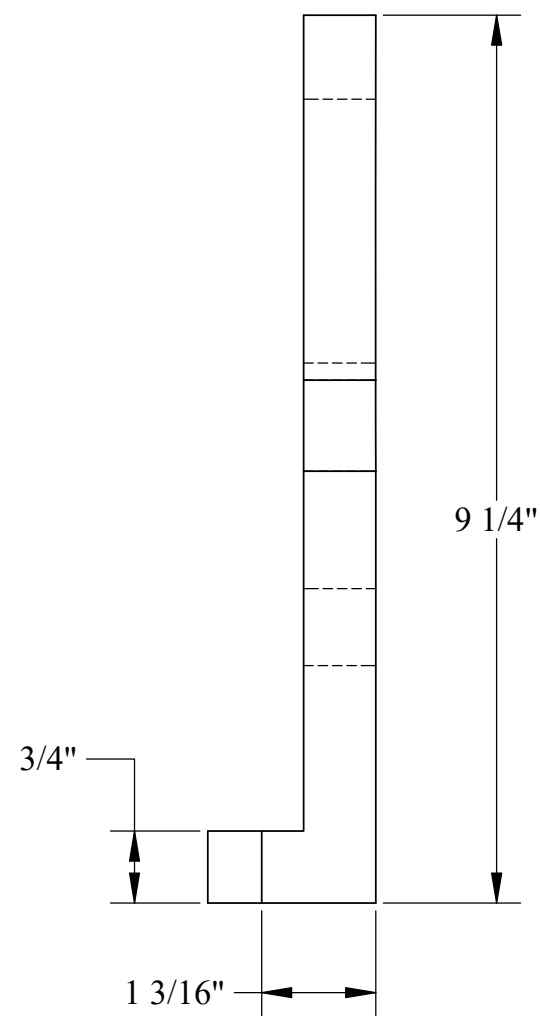
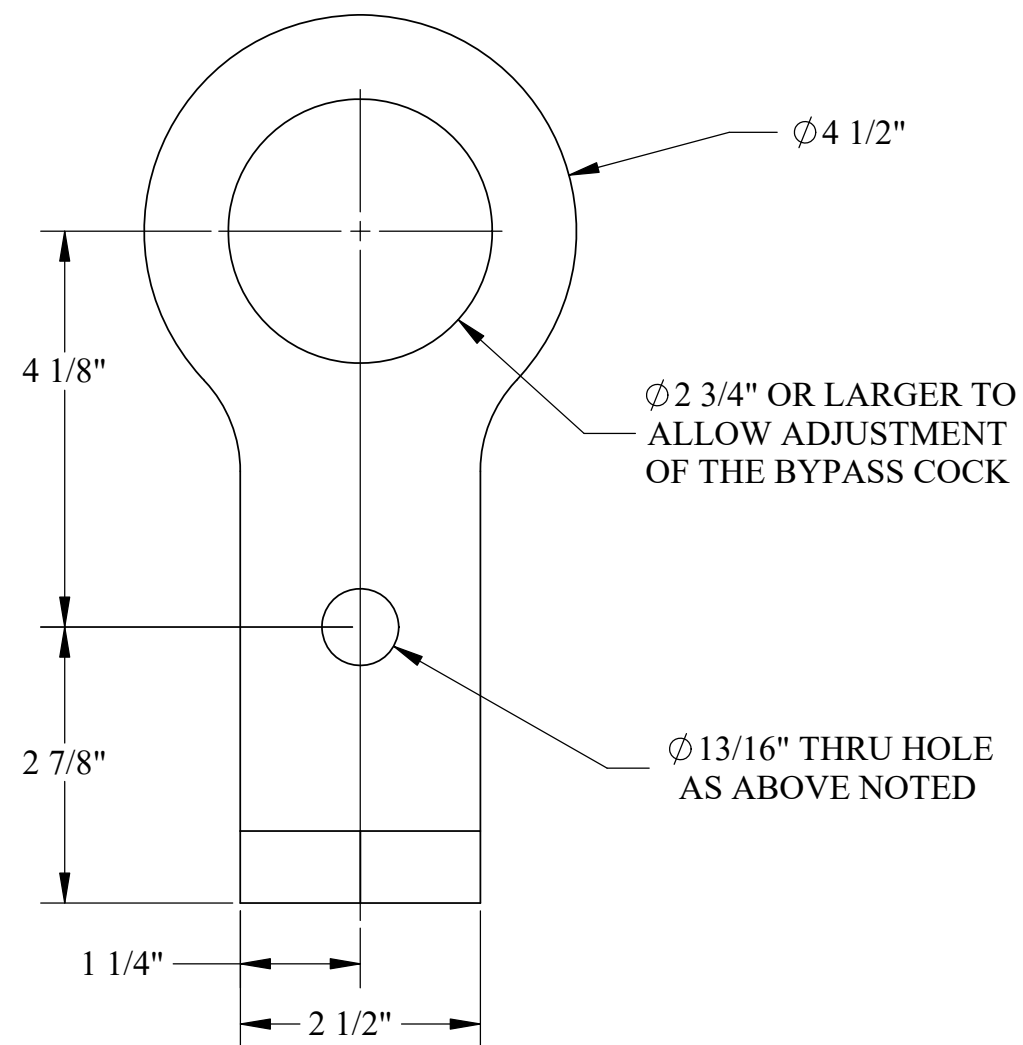
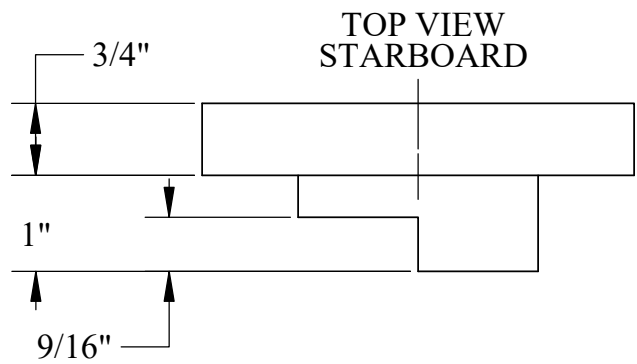
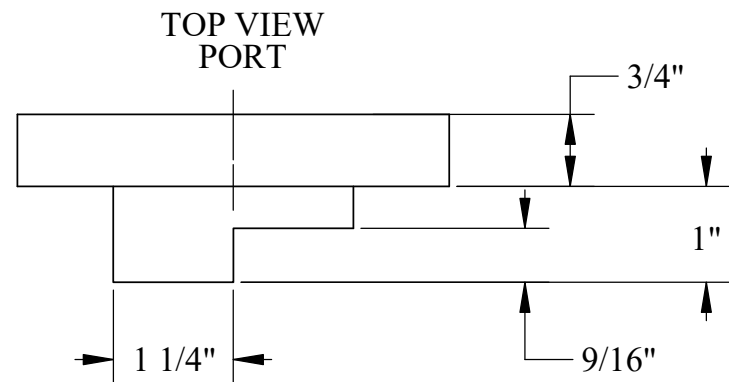
U.S.S. Monitor Steam Engine

Material Cast Iron	Drawn By - Date RWC 10-2018	Sub-Assembly Cutoff Chest
Weight (Lbs) 21.62	Description Cutoff Bypass Cock	
Scale 1:2		
Part # CC 6		



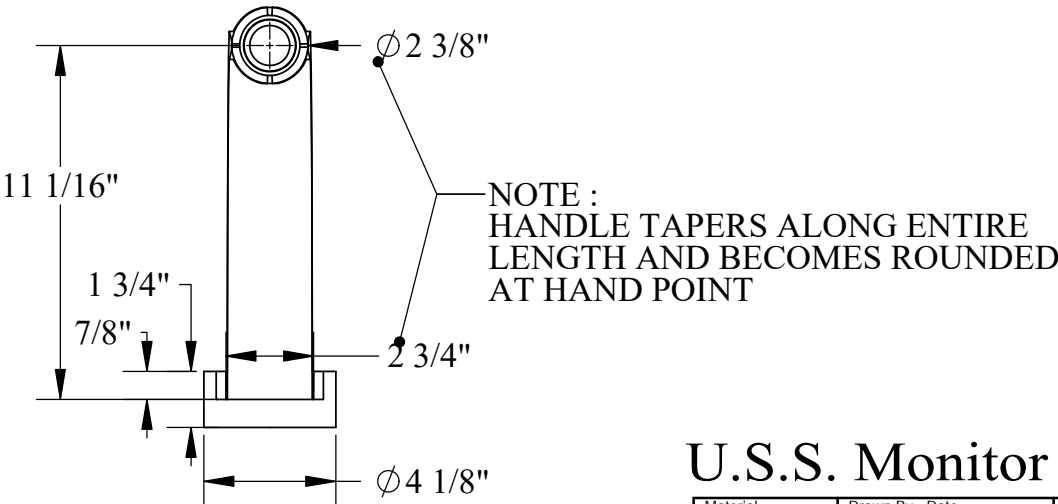
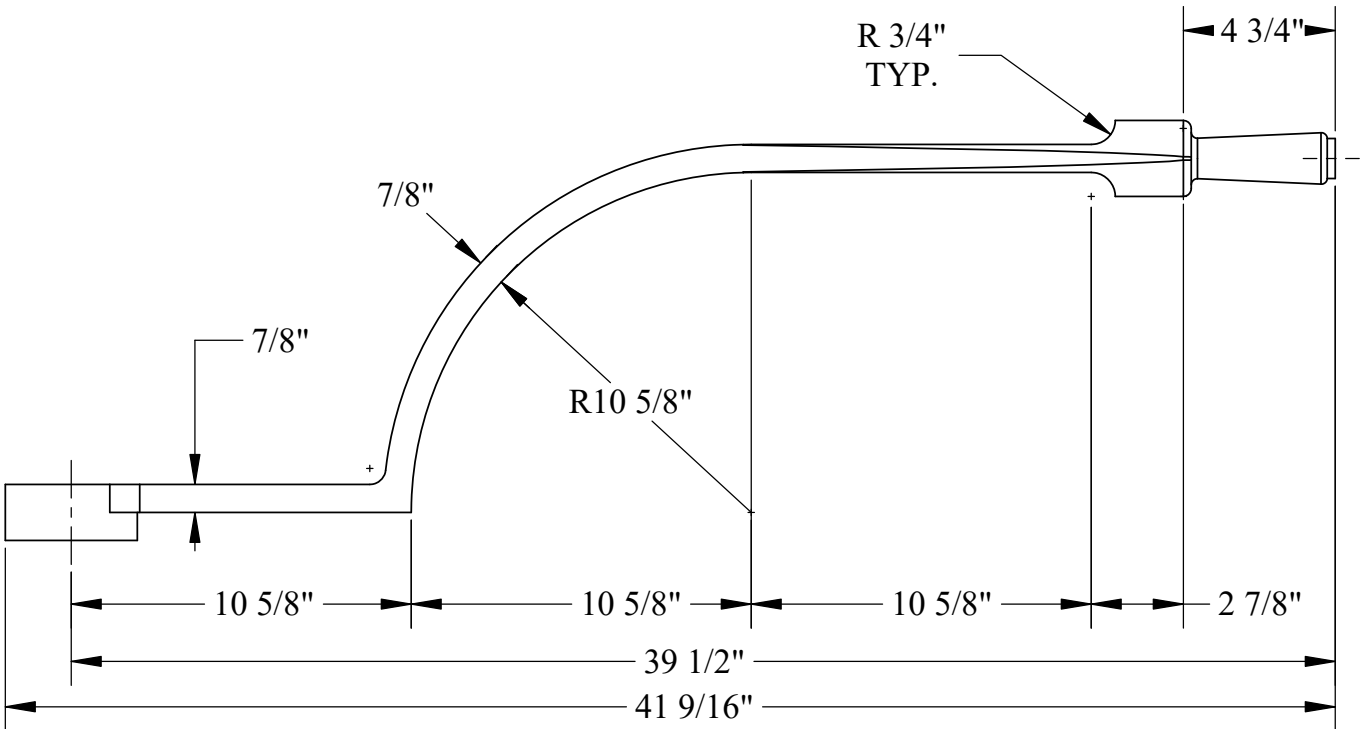
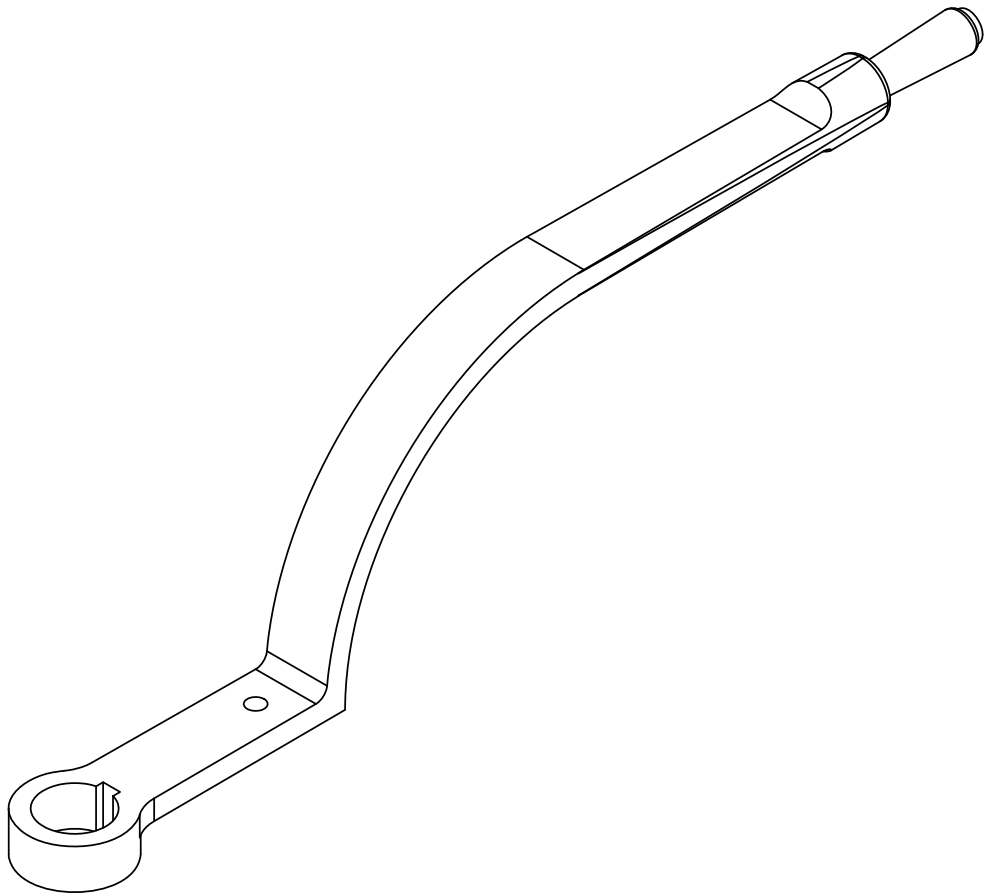
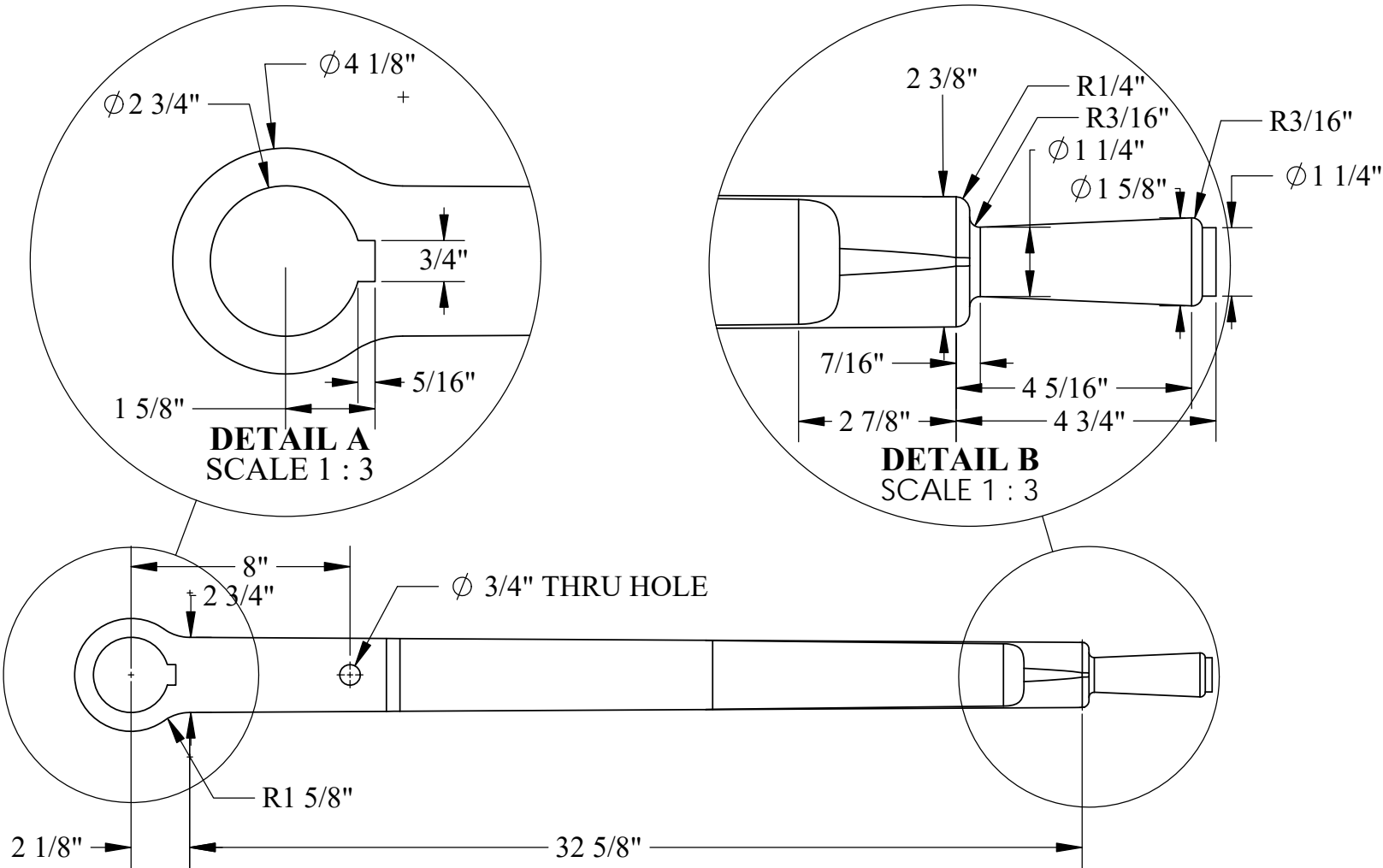
U.S.S. Monitor Steam Engine

Material STEEL	Drawn By - Date RWC 10-2018	Sub-Assembly Cutoff Chest
Weight (Lbs) 0.23	Description Cutoff Cock Key	
Scale 2:1		
Part # CC 7		



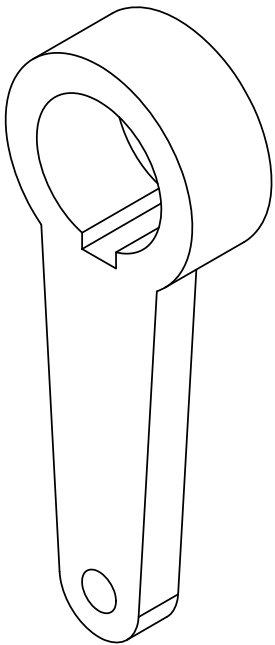
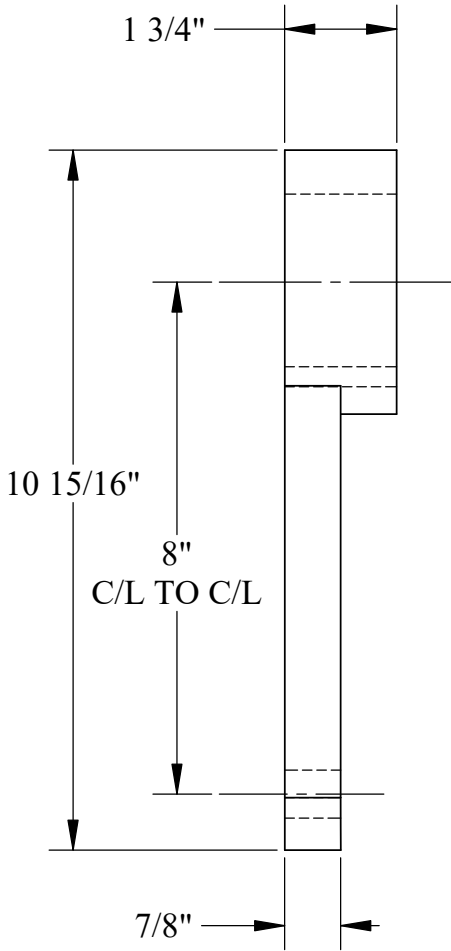
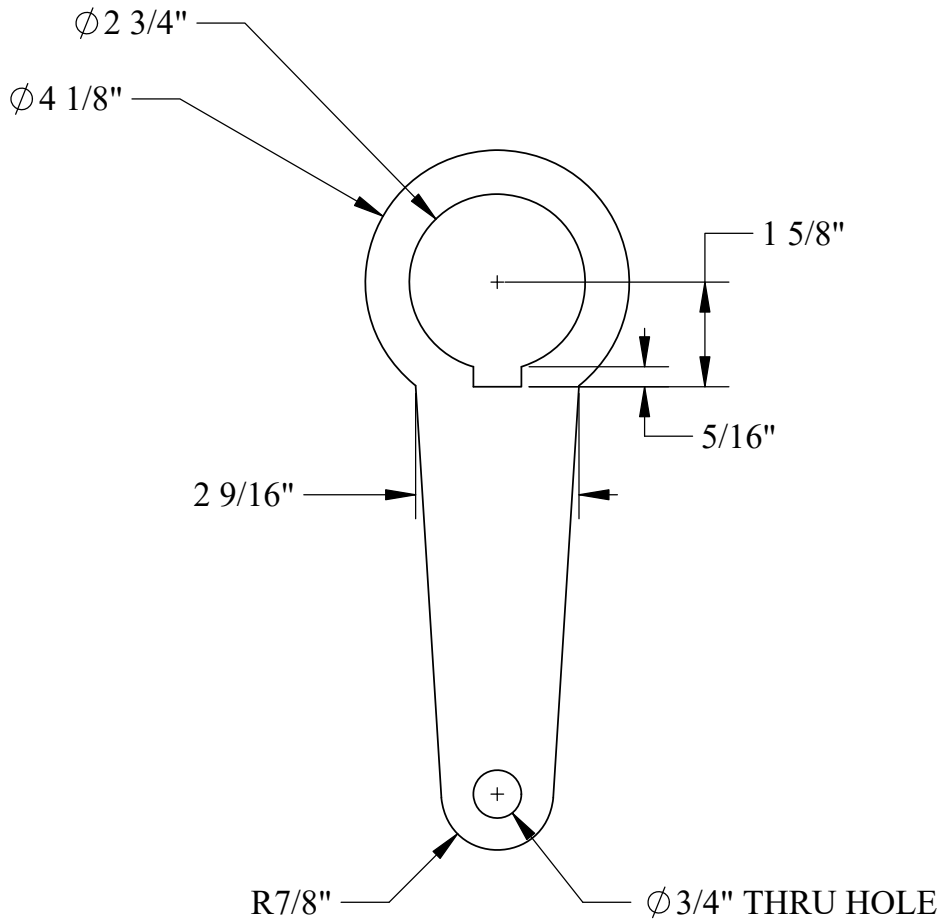
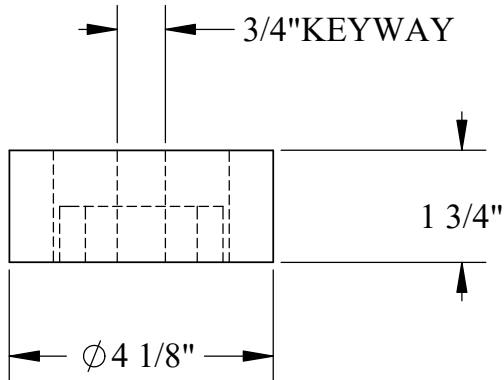
U.S.S. Monitor Steam Engine

Material STEEL	Drawn By - Date RWC 10-2018	Sub-Assembly Cutoff Chest
Weight (Lbs) 5.04	Description Cutoff Bypass Cock Clamp-P	
Scale 1:2		
Part # CC 8		



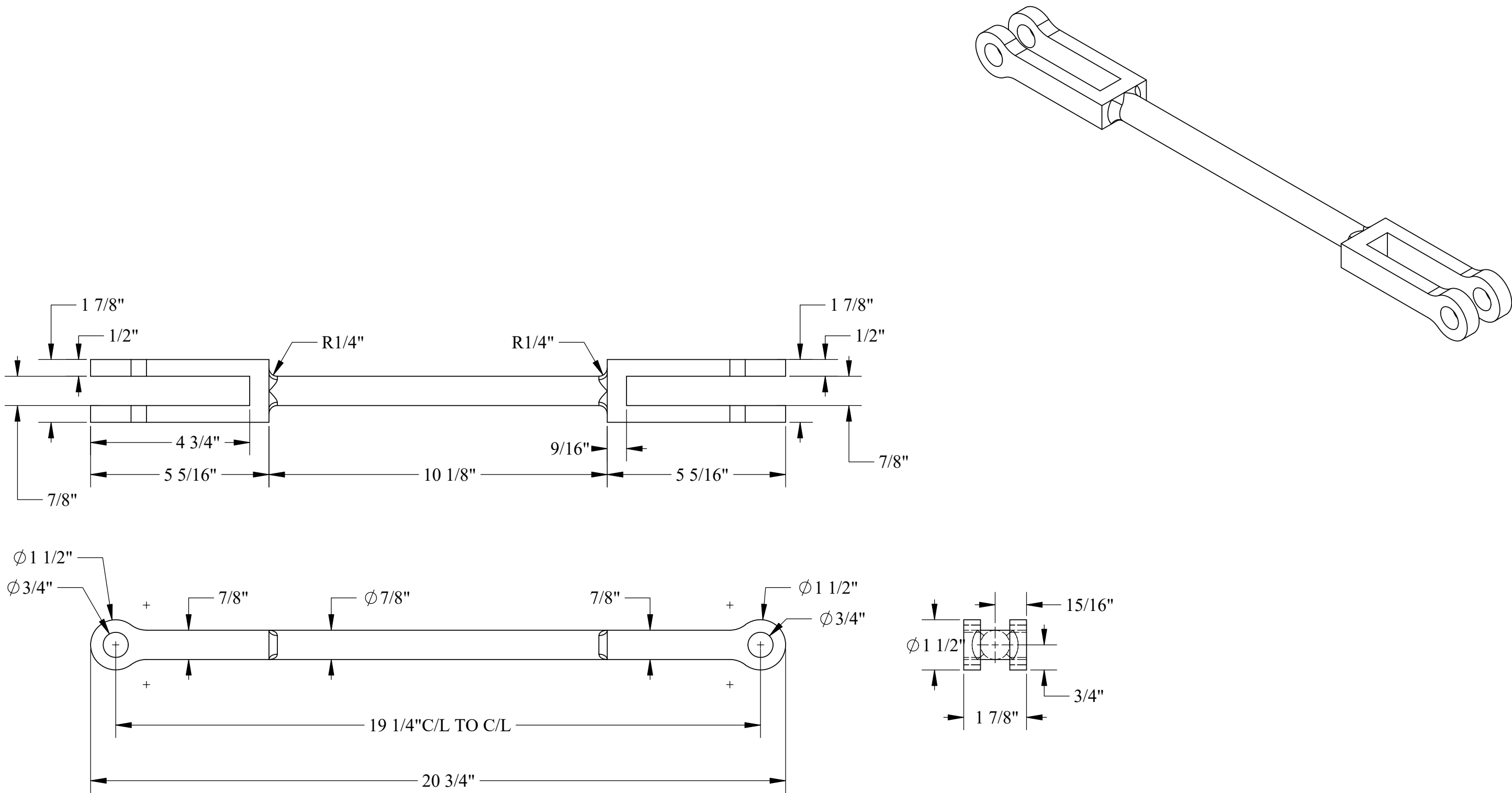
U.S.S. Monitor Steam Engine

Material STEEL	Drawn By - Date RWC 10-2018	Sub-Assembly Cutoff Chest
Weight (Lbs) 32.38	Cutoff Bypass Handle-Port	
Scale 1:6		
Part # CC 9		



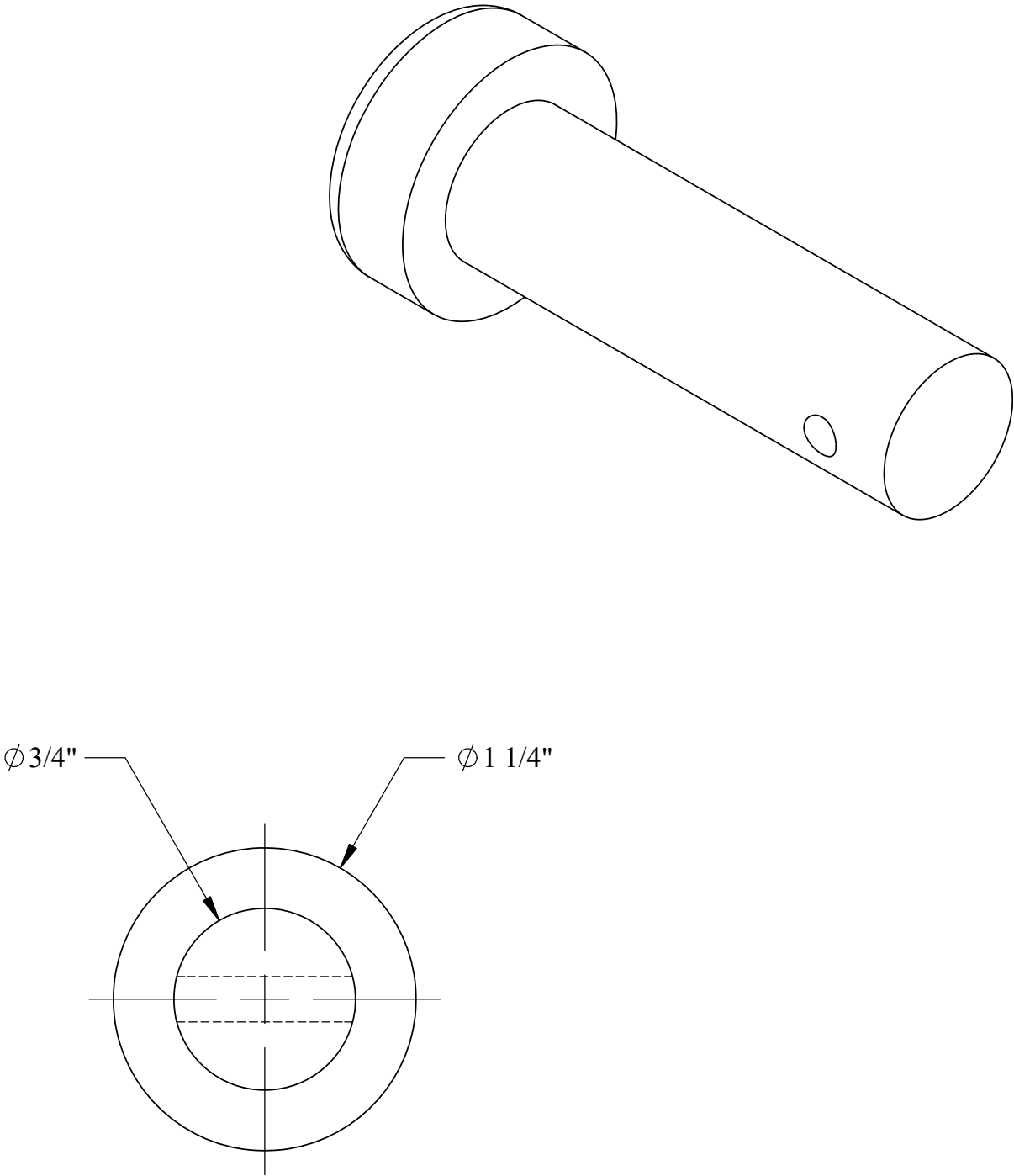
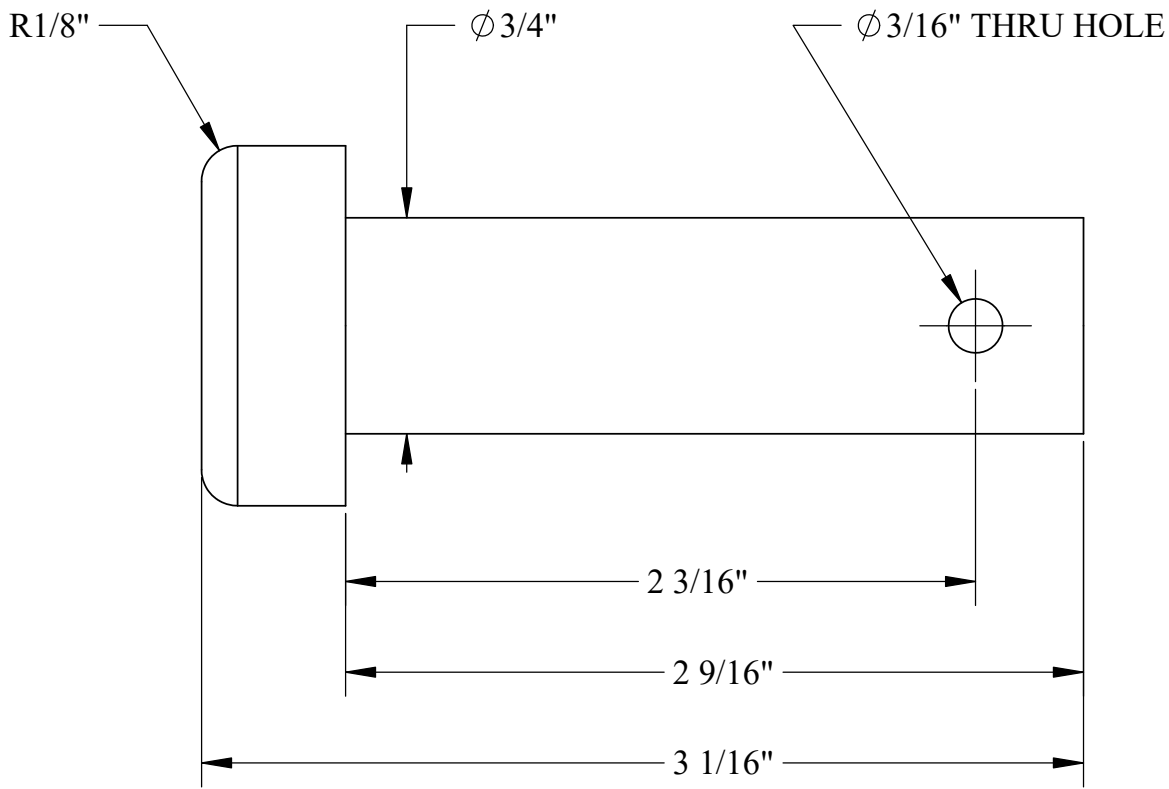
U.S.S. Monitor Steam Engine

Material STEEL	Drawn By - Date RWC 10-2018	Sub-Assembly Cutoff Chest
Weight (Lbs) 7.03	Cutoff Bypass Handle-Starboard	
Scale 1:3		
Part # CC 10		



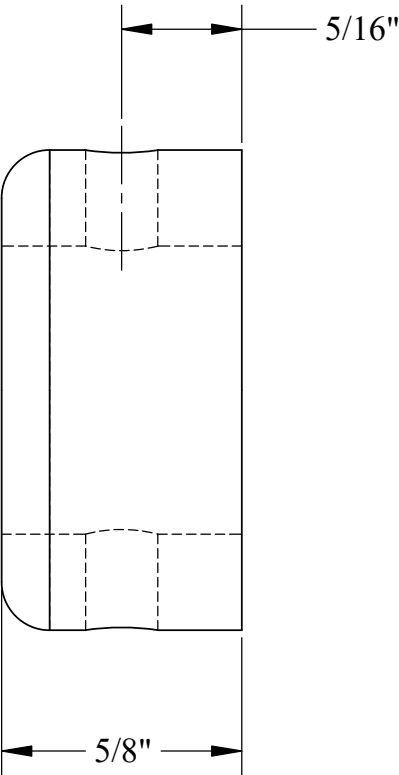
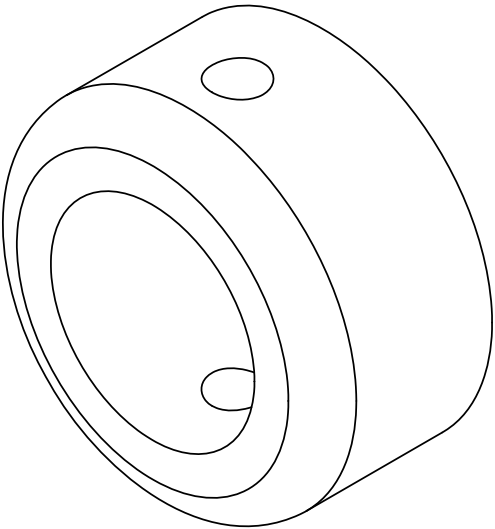
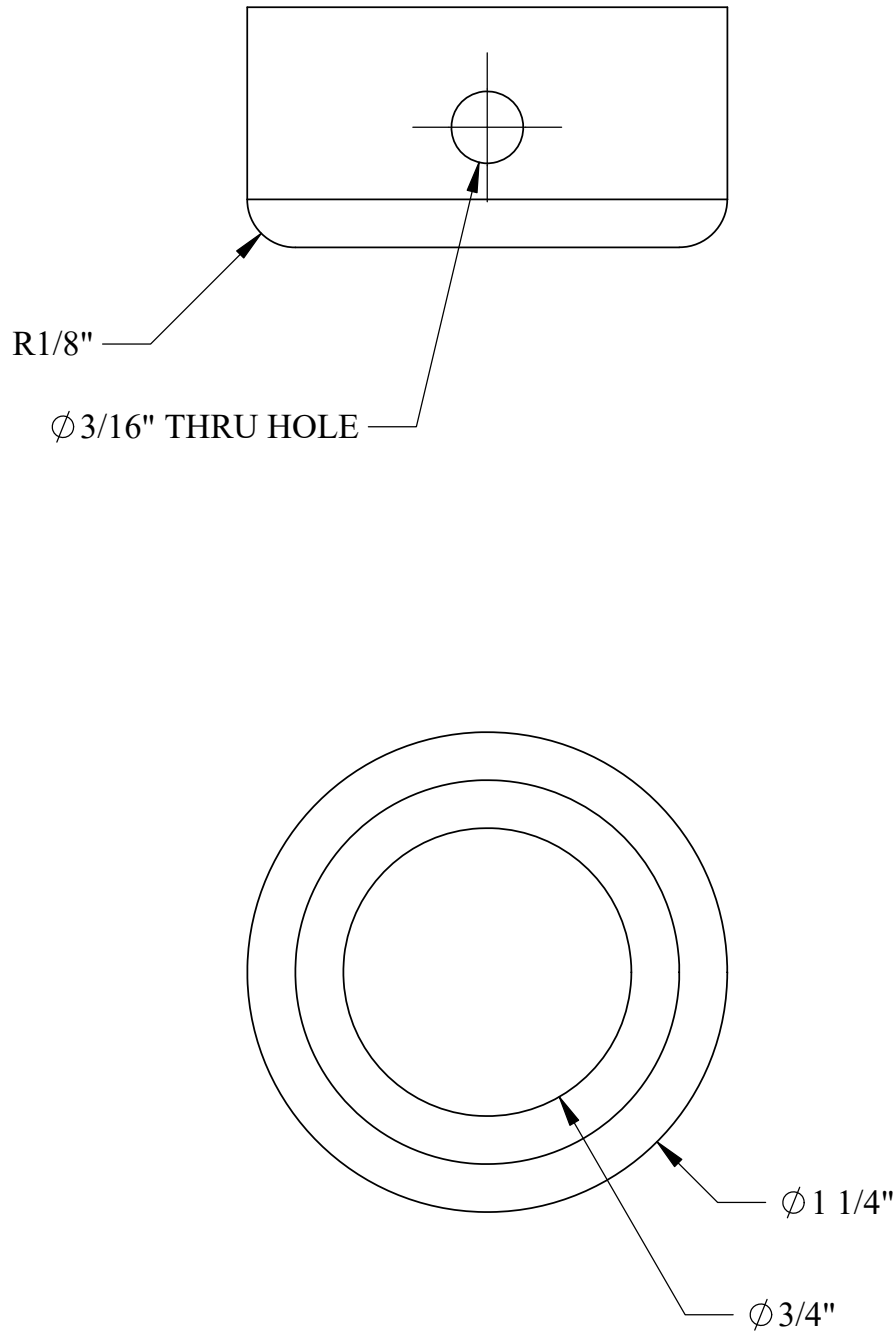
U.S.S. Monitor Steam Engine

Material STEEL	Drawn By - Date RWC 10-2018	Sub-Assembly Cutoff Chest
Weight (Lbs) 4.70	Description Cutoff Handle Linkage	
Scale 1:3		
Part # CC 11		



U.S.S. Monitor Steam Engine

Material STEEL	Drawn By - Date RWC 10-2018	Sub-Assembly Cutoff Chest
Weight (Lbs) 0.49	Description Cutoff Linkage Pin	
Scale 3:2		
Part # CC 12		



U.S.S. Monitor Steam Engine

Material STEEL	Drawn By - Date RWC 10-2018	Sub-Assembly Cutoff Chest
Weight (Lbs) 0.13	Description Cutoff Linkage Collar	
Scale 2:1		
Part # CC 13		